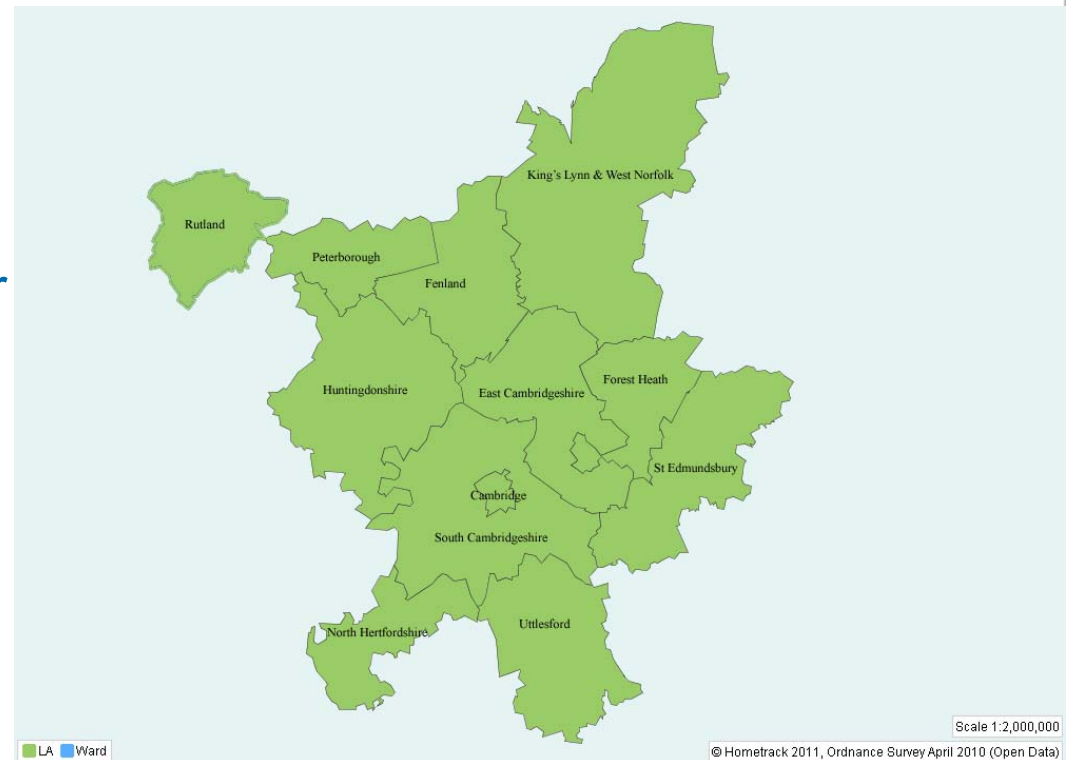


# Greater Cambridge Greater Peterborough LEP – our offer

Name Dr Geoff Brighty  
Job title Central Area Manager  
Date 18 July 2011



# Our aims

- ➔ Protect and improve the natural environment
- ➔ Promote sustainable development
  - ➔ Lead by example
- ➔ Provide a first class customer service
- ➔ Maximise environmental outcomes



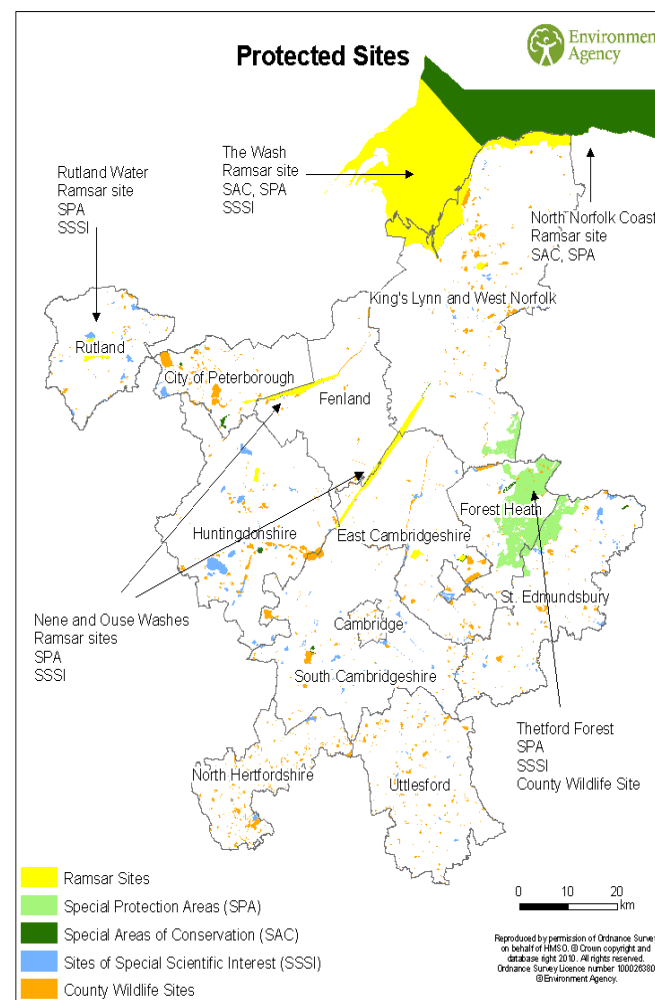
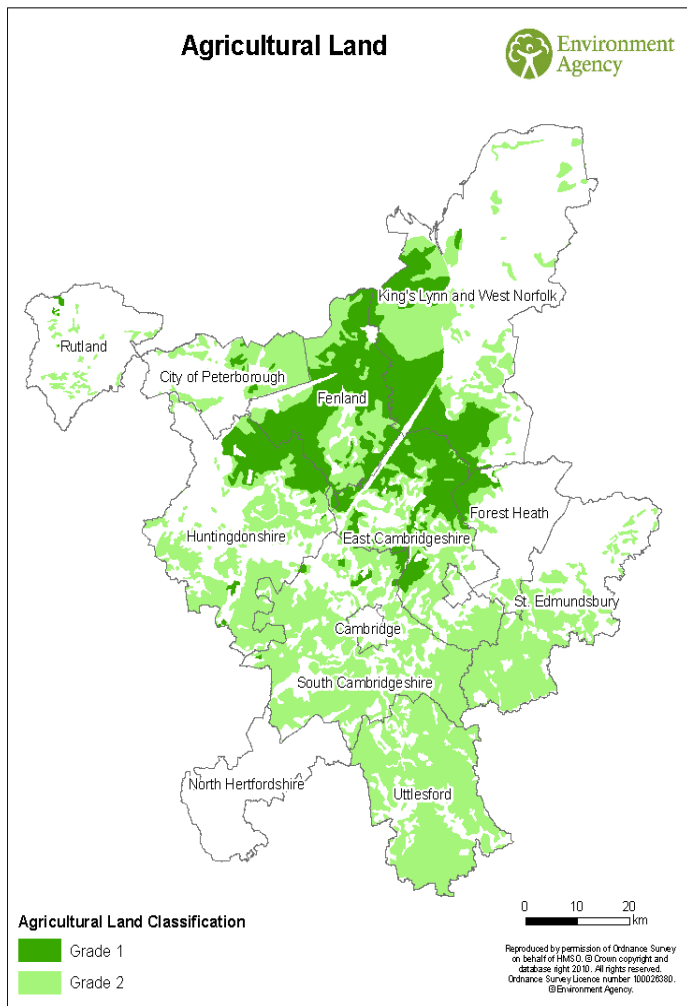
**Work with others to bring pace and ingenuity to the challenge of a changing environment**

# What we do

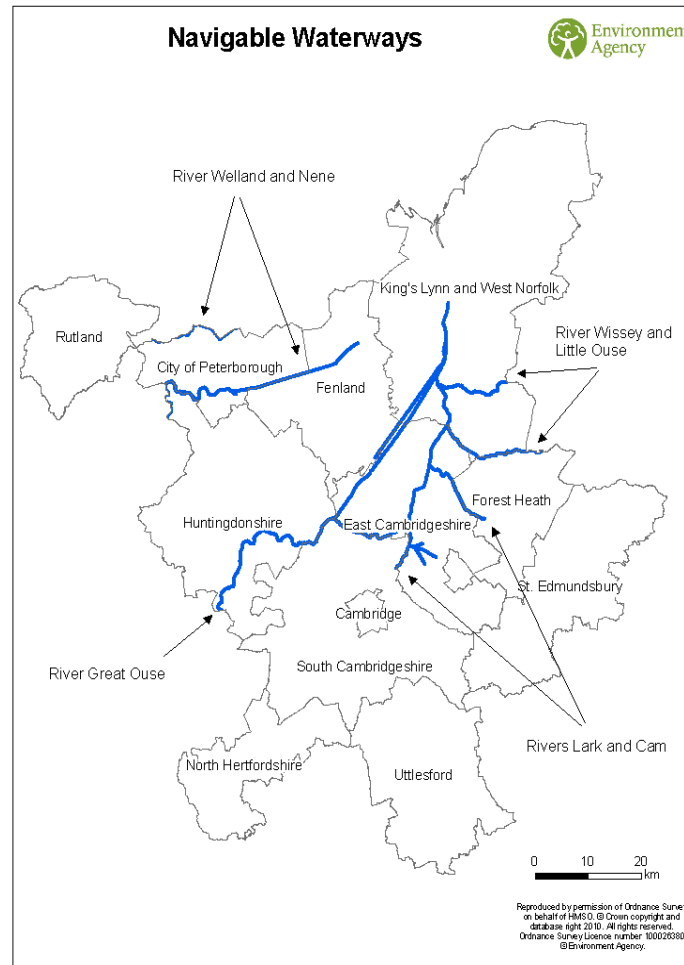
- ➔ Modern regulator and efficient operator to support business
- ➔ Influential advisor and effective partner



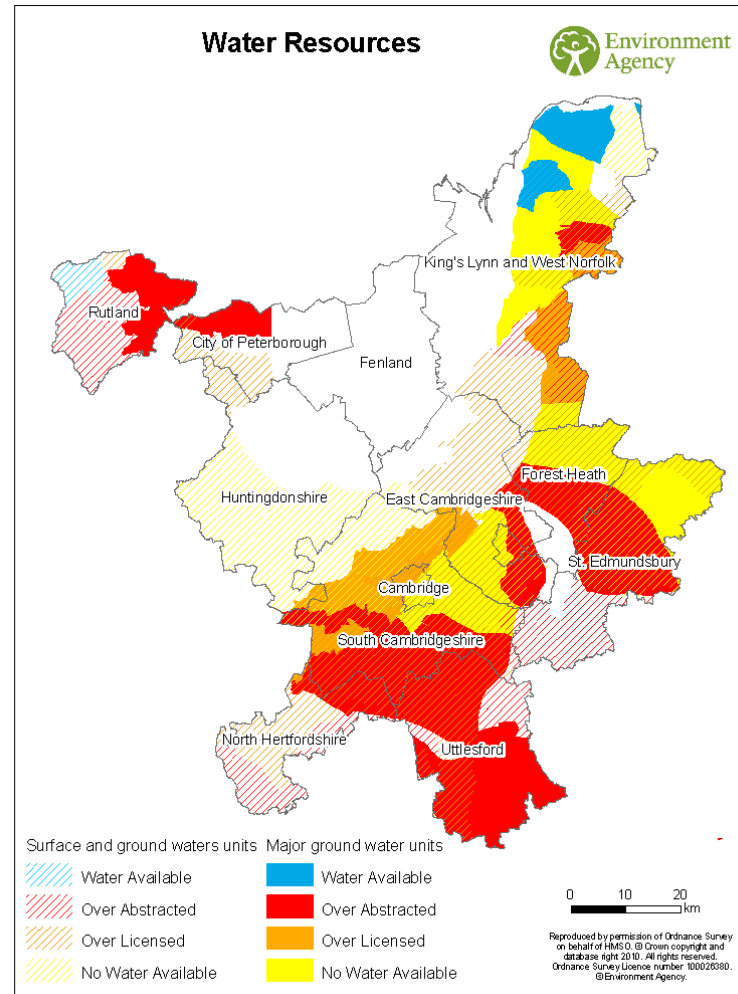
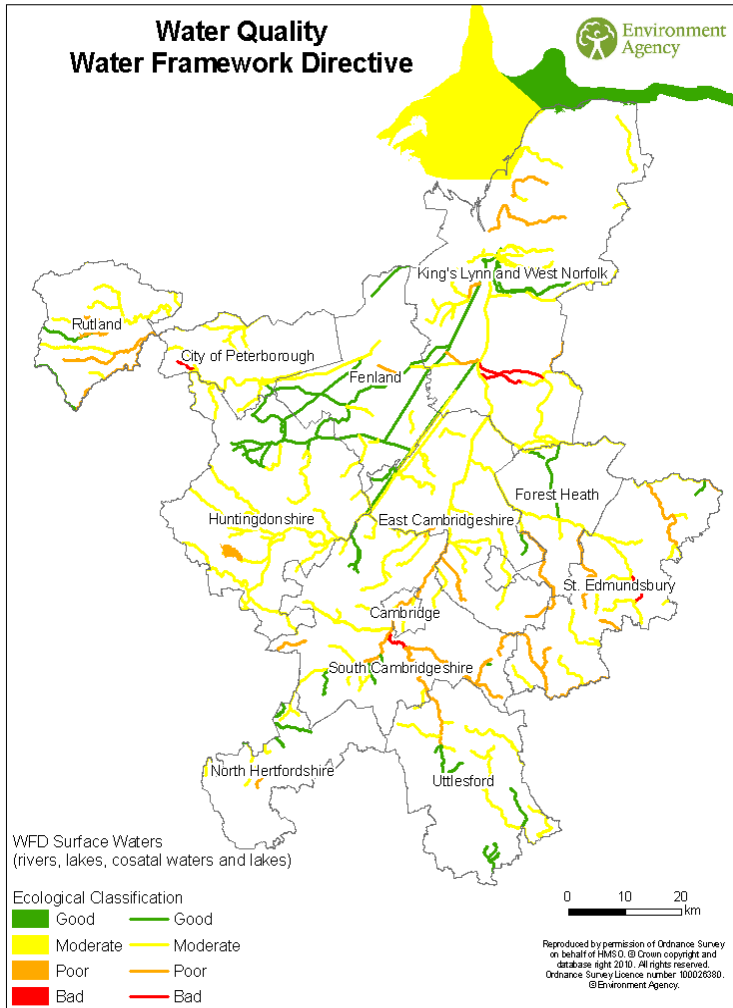
# Environmental Assets in the LEP area



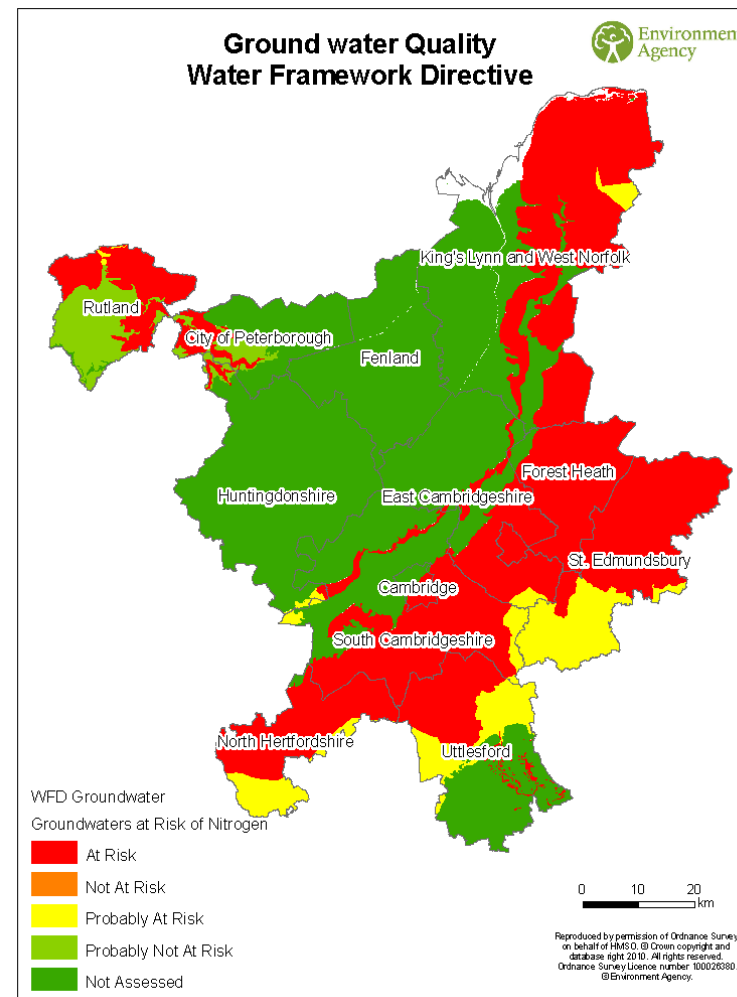
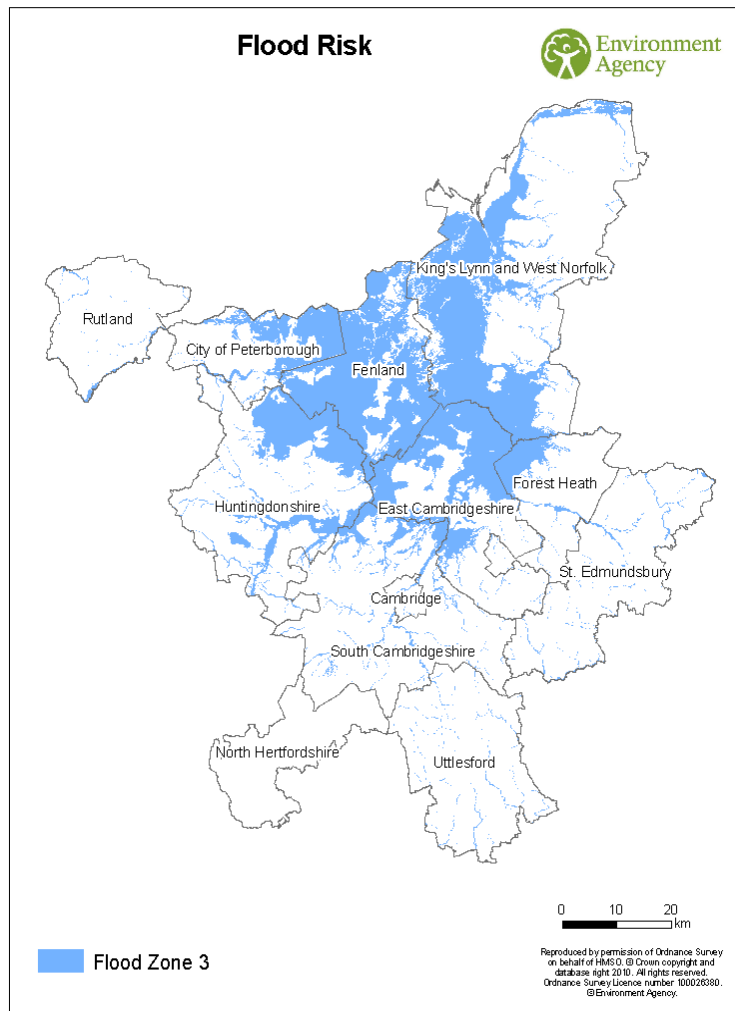
# Environmental Assets in the LEP area



# Environmental Constraints in the LEP area



# Environmental Constraints in the LEP area



# How we can help you

## LEP area of focus

## Our contribution

- **Strategic economic vision, infrastructure, housing and planning**

Sustainable growth, flood risk, environmental infrastructure, waste, resource efficiency, water resources, waterways development, tackling climate change, cross boundary working

- **Economic development and support for high growth business**

Sustainable growth, flood risk, environmental infrastructure, waste, resource efficiency, water resources, tackling climate change, regulation and advice, agriculture

# How we can help you - strategic economic vision, infrastructure, housing and planning

## The Challenge:

- ➔ Sustainable economic growth
- ➔ Deliver 100,000 new homes, 65,000 jobs and business infrastructure within 20 years

## We help provide:

- ➔ 'State of the Environment' information
- ➔ Well planned environmental infrastructure
- ➔ Cost effective strategic planning
- ➔ High quality green infrastructure



# How we can help you - Economic development and support for high growth business (1)

## The challenge for Industry and business:

- ➔ Sustain 700,000 jobs and 60,000 enterprises
- ➔ Low carbon economy
- ➔ Healthy clean environment
- ➔ Align environmental protection with growth



# How we can help you - Economic development and support for high growth business (2)

## The challenge for agriculture and food production

- ➔ 90% of land is agricultural
- ➔ Major employer
- ➔ Driest part of the UK
- ➔ Highest grade land is prone to flooding
- ➔ Diffuse pollution affects water quality



# How we can help you - Economic development and support for high growth business (3)

## Help Industry and business by:

- ➔ Reducing waste and improving resource efficiency
- ➔ Providing flexible regulation
- ➔ Dealing with flood risk
- ➔ tackling climate change
- ➔ Improving environmental performance



NetRegs



# How we can help you - Economic development and support for high growth business (4)

## Help agriculture and food production by:

- ⇒ Supporting sustainable abstraction
- ⇒ Reducing carbon emissions
- ⇒ Improving soil management
- ⇒ Reducing diffuse pollution to improve water quality
- ⇒ Supporting renewable energy schemes



# How we can help you further ...

## Skills and employment

- Local employer
- Skilled workforce
- Local suppliers



## Funding

- In-kind help and support
- Evidence and project design



# What we would like to explore with you

- ➔ Where are we operating?
- ➔ What do we want to do to develop the LEP economically, taking those aspects into account?
- ➔ How do we do this?
- ➔ Working arrangements?
- ➔ Further ideas and suggestions.